

April Blossoms Table Runner

by Homespun Hearth

Measures 15" x 45"



Fabric Requirements

- 3 Background Fabrics - One Fat Quarter Each
- Green (Stems) - 6" x 45" Bias Cut
- 3 Greens (Leaves) - 6" x 10" Each
- Pink (Flower) - 10" x 21"
- Blue (Flower) - 10" x 21"
- Yellow (Flower Centers) - 5" x 10"
- Stripe (Binding) - 1/4 yard
- Backing - 20" x 48"

Step One - Background

Background Fabric A (Large Floral):

- Cut: 1) 5 1/2" x 15 1/2" rectangle
- 2) 5 1/2" x 10 1/2" rectangle
- 1) 5 1/2" x 5 1/2" square

Background Fabric B (Small Print):

- Cut: 2) 5 1/2" x 15 1/2" rectangle
- 1) 5 1/2" x 10 1/2" rectangle
- 2) 5 1/2" x 5 1/2" square

Background Fabric C (Solid):

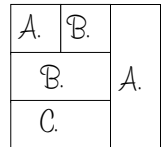
- Cut: 1) 5 1/2" x 15 1/2" rectangle
- 1) 10 1/2" x 10 1/2" square
- 1) 10 1/2" x 5 1/2" rectangle

Step One - (Cont.)

Sew the background together in sections as follows:

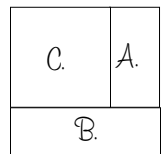
Section 1:

- Sew a Fabric A) 5 1/2" square to a Fabric B) 5 1/2" square.
- Sew a Fabric B) 5 1/2" x 10 1/2" rectangle to the section.
- Sew a Fabric C) 5 1/2" x 10 1/2" rectangle to the section.
- Sew a Fabric A) 5 1/2" x 15 1/2" rectangle to the section side.



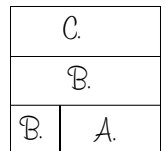
Section 2:

- Sew a Fabric A) 5 1/2" x 10 1/2" rectangle to the side of the Fabric C) 10 1/2" Square
- Sew a Fabric B) 5 1/2" x 15 1/2" rectangle to the bottom section.

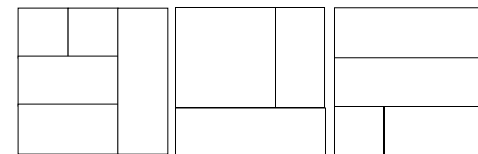


Section 3:

- Sew a Fabric B) 5 1/2" square to a Fabric A) 5 1/2" x 10 1/2" rectangle
- Sew a Fabric B) 5 1/2" x 15 1/2" rectangle to the section.
- Sew a Fabric C) 5 1/2" x 15 1/2" rectangle to the section.



Sew All 3 Background Sections together to complete the background.



April Blossoms Table Runner

Step Two - Stems

Cut the Bias Stem Fabric into 2) 2 1/4" x 45" strips.

With Right Sides Together, using a 1/4" seam, sew up the long length of one strip, turn and press. Make 2.

Using the image as a visual guide, pin the flowing stems to the Background. Applique in place.

Step Three - Quilting

Layer the Background with batting and Backing. Quilt the pieces together. For the sample, we followed the flowing lines of the stems, and left larger portions open as well.

Step Four - Binding

Cut the binding into 3) 2 1/4" strips. Attach together and bind the table topper.

Step Five - Leaves

Cut 2) Leaves from each of the Green Leaf Fabrics (total 6) - Be Sure to add Seam Allowance!

Using your favorite Applique method, and the image as a placement guide, applique the leaves onto the background fabric. For depth, you can also add the leaf veins (stitched) as well



Flower Center Template

Cut 2 From Yellow Fabrics.

** Add Seam Allowance!

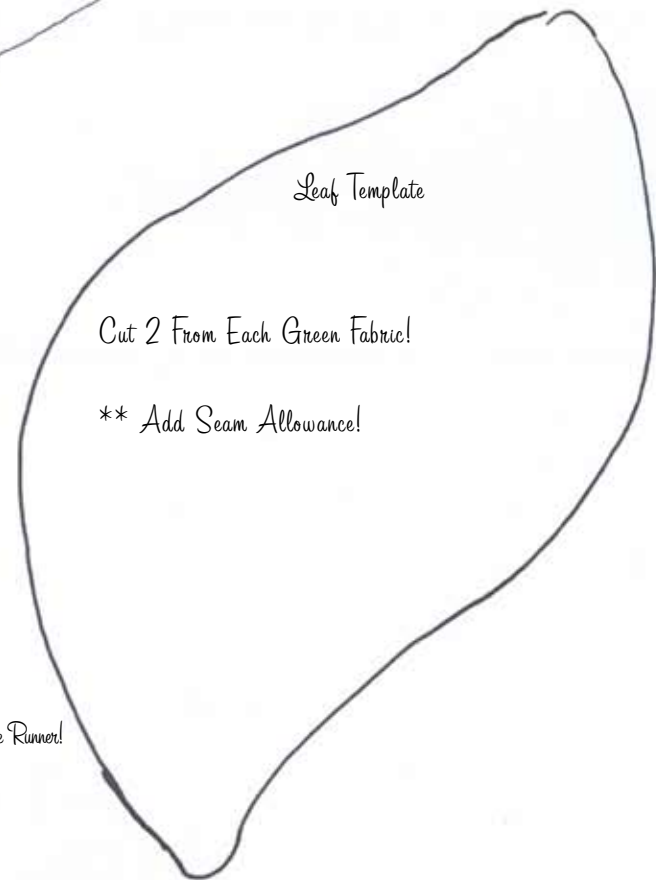
Step Six - Flowers

Cut 2) 10" squares from the pink fabric. (Optional - cut one 10" square Batting). Draw the flower template onto the Wrong Side of one Pink fabric.

Layer the two Pink fabrics, Right Sides Together, with optional batting on the bottom, and sew directly on the flower template. Trim all excess fabric from flower, and clip curves. Carefully cut a 3" slice across the middle of the top Pink fabric and turn the flower. Slip stitch opening closed. Press.

Using your favorite Applique Method, applique a Yellow Center to the Flower. Applique the flower to the Background, using the image as a placement guide. Repeat with the Blue Flower.

Enjoy your April Blossoms Table Runner!



Leaf Template

Cut 2 From Each Green Fabric!

** Add Seam Allowance!

April Blossoms Table Runner

Flower Template

Trace onto one Pink and one Blue
Flower 10" Squares.
Sew directly on these drawn lines.